

The Solid Mount™ Installation Instructions

The Solid Mount™ consists of 14 parts

- 2 - Mounting plates
- 2 - Threaded mounting shafts
- 2 - Lag bolts
- 2 - Fender washers
- 6 - Self tapping screws



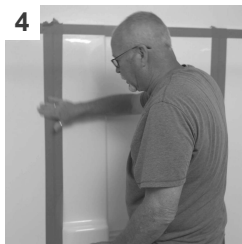
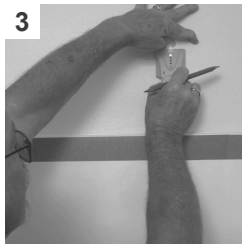
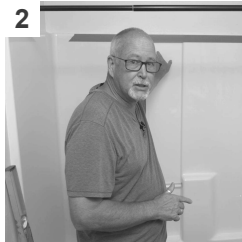
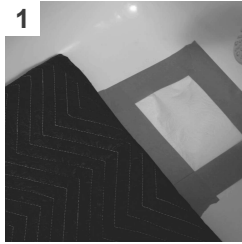
Instruction Video

The Prep Work

1. Video - 0:26
Cover the drain and put down protective material on all work surfaces. (fig. 1)
2. Video - 0:43
Put a strip of blue tape across the top of the shower. (fig. 2)

Locating and Marking the Stud Locations

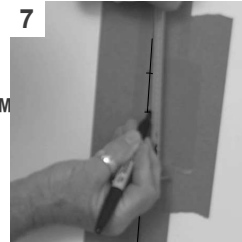
3. Video - 0:53
Take your stud-finder and scan the drywall over the top of the fiberglass enclosure, marking the stud locations on the blue tape. (fig. 3)
4. Video - 1:29
Determine which studs will work for the preferred location of your grab bar. Put blue tape down the walls along those studs. (fig. 4)
5. Video - 2:13
Line the level up with the marks for the stud locations and draw a line down the blue tape. (fig. 5)



6. Video - 2:41
Hold the grab bar in place where you want it, centering the flange on the line you drew in step 5. Mark the top and bottom of the flange. (fig. 6)

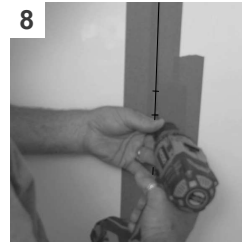


7. Video - 3:30
Using a tape measure, mark the center location of the 2 marks from step 6. (fig. 7)

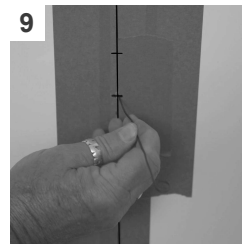


Installing The Solid Mount™

8. Video - 3:49
Using an 1/8" drill bit, drill a center hole at the intersection of the line and the mark from step 7. (fig. 8)



9. Video - 4:15
To confirm you have located the center of the stud, insert a 6" piece of wire into the hole. Gently move it left and right till you feel the edge of the 2x4. If you feel you are not close to the center of the 2x4, you can move up to a 1/4" left or right and then re-drill and recheck if needed. The 2" hole you drill later will cover up the 1/4" adjustment. (fig. 9)



10. Video - 4:52
Take the 2" hole saw and start to drill the hole. **DO NOT** push hard against the fiberglass, take your time. Once you drill through the fiberglass, keep going until the center drill bit hits and marks the stud. This will show you where to drill the pilot hole. (fig. 10)



11. Video - 5:50
Prior to drilling your pilot hole, locate the mark you made in step 10. Confirm it is close to the center of the stud. If not, you can move your pilot hole 1/4" in either direction. Now drill your 3/16" pilot hole. (fig. 11)



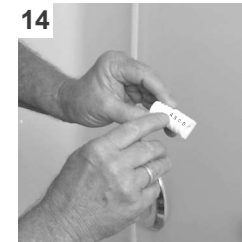
12. Video - 6:05
Measure the distance from the stud to the face / front of the fiberglass shower as shown. (fig. 12)



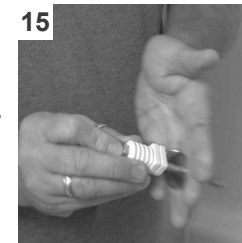
13. Video - 6:15
Using the measurement from Step 12 and Chart 1, figure out the row your measurements work with: 1, 2, 3, 4 or 5. (fig. 13)

Full Size Chart on Back	CHART 1	How many spacers do I need to remove?
	7 7/8" - 1 5/8"	Remove spacers A, B, C and D
	1 3/4" - 1 3/8"	Remove spacers B, C and D
	1 7/8" - 1 5/8"	Remove spacers C and D
	1 11/16" - 1 1/4"	Remove spacer D
	1 15/16" - 2 1/8"	Do not Remove any spacers

14. Video - 6:25
The spacers are labeled A, B, C, and D. Based on the row you picked on Chart 1 use a hacksaw to remove the extra spacers. (fig. 14)



15. Video - 6:44
Take a lag bolt and slide it in to the threaded end of the spacer. Now slide the washer on to the lag bolt as shown in Chart 1. (fig. 15)



16. Video - 6:54
Install the lag bolt assembly from step 15 into the pilot hole and tighten down snug so it can't spin. (fig. 16)



17. Video - 7:02
Test that the spacers are tight and cannot turn. (fig. 17)



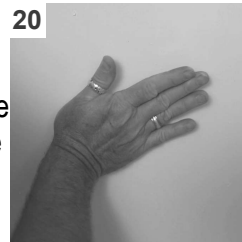
18. Video - 7:21
Apply a bead of silicone caulking around the hole to prevent leaks. (fig. 18)



19. Video - 7:32
Screw mounting plate onto the spacer until flush with the fiberglass wall. (fig. 19)



20. Video - 7:36
Place your hand flat on the mounting plate and, while pushing in, turn until you see the fiberglass just start to flex. Wipe off excess silicone. (fig. 20)




**** IF BOTH MOUNTING BRACKETS
ARE INSTALLED GO TO STEP 23 ****

21. Video - 7:38
To install the second mounting bracket, line up one end of the grab bar on the installed mounting bracket from step 20. (fig. 21)




22. Video - 7:48
While holding the flange in place on the first bracket, center the second flange on the line drawn in step 5. Mark the top and bottom of the flange. (fig. 22)




**** Repeat Steps 7 - 20 to Finish Installing the Second Mounting Bracket ****

Installing the Grab Bar


23. Video - 10:44
Slide both flanges to the center of the bar and put blue tape on each side. This will prevent the flanges from getting in the way while finishing the installation. (fig. 23)



24. Video - 11:03
Hold the grab bar in place on both mounting brackets. While doing so mark 1 hole on the first flange for the first screw. (fig. 24)




25. Video - 11:13
Using an 1/8" drill bit, and the mark from step 24, drill the first hole in the mounting plate. (fig. 25)




****Only Use a Hand Screwdriver to Attach the Screws to The Mounting Plate****


26. Video - 11:35
Using one of the supplied screws and a hand held phillips screwdriver, loosely attach the grab bar to the mounting plate. (fig. 26)




27. Video - 11:49
Line up the second flange to the second mounting plate and mark 1 of the holes. (fig. 27)




28. Video - 11:59
Using an 1/8" drill bit, and the mark from step 27, drill the first hole in the mounting plate. (fig. 28)



29. Video - 12:06
Using one of the supplied screws and a hand held phillips screwdriver. Hand tighten the grab bar to the mounting plate. (fig. 29)




30. Video - 12:11
Go back to the first screw from step 26 and hand tighten it. With each flange held in place with 1 screw, drill the last 2 holes on each flange with an 1/8" drill bit. Using the last 4 supplied screws, hand tighten the flange to the mount. (fig. 30)



Sealing The Solid Mount™
31. Video - 12:50
Put a thin bead of caulking around the flange and if you have flange covers slide them in place. (fig. 31)



Finished Install
32. Video - 13:47
Now give the bar a good pull and feel how **"Solid"** your new grab bar is. (fig. 32)



The Solid Mount™

Suggested Tools List

- Painter's Tape
- Pencil, Marker, or Pen
- Stud Finder
- Level
- Tape Measure
- Drill and Drill Bits - 1/8", 3/16", and 2" Hole Saw
- Hacksaw with fine tooth blade (18t - 24t suggested)
- Ratchet or Impact
- 1/2" Socket and Extension
- Silicone Caulking (white preferred)
- Phillips Screwdriver

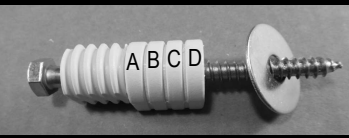
Grab bars should be installed as recommended in the standard for grab bars, ASTM F446-85(90) and / or ANSI A117.1, along with your local building codes.

Instruction Video

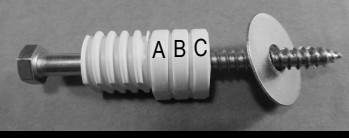


CHART 1 How many spacers do I need to remove?

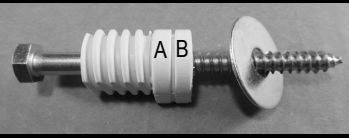
1. 1 15/16" - 2 1/8"
Do not Remove any spacers



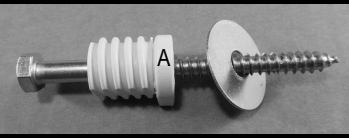
2. 1 11/16" - 1 7/8"
Remove spacer D



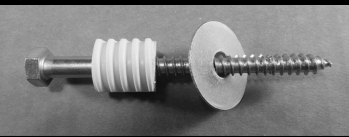
3. 1 7/16 - 1 5/8"
Remove spacers C and D



4. 1 3/16" - 1 3/8"
Remove spacers B, C and D



5. 7/8" - 1 1/8"
Remove spacers A, B, C and D



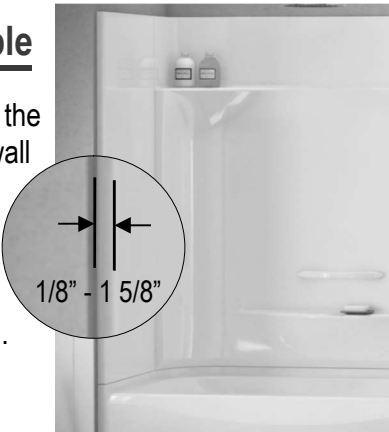
The Solid Mount™



The Only Grab Bar Mounting Bracket Designed and Patented Specifically to Install Grab Bars into Fiberglass Shower or Tub Enclosures. Installation Takes About 1 hour.

Fully Adjustable

If the distance from the fiberglass shower wall to the drywall measures from 1/8" - 1 5/8", The SolidMount™ should work for you.



See QR code on back for Instruction Video

Manufactured by
Back to Basics Innovative Design
Anaheim, CA. 92804
www.thesolidmount.com
MADE in the U.S.A.

